

We Need a Building Now!Our History

In September 1969, Campus Community Cooperative Day Care Centre was opened as an under 2 years old day care centre for the children of students and working parents (especially single mothers) of the university community. In March, 1970, a sit-in to demand the money needed for renovations to the university-owned building housing the centre received wide student support and acknowledgement by the University administration that day care is a major responsibility of the institution. The money was granted and a President's Advisory Committee on Social Responsibility was established by President Bissell. This committee was to recommend policy on the university's responsibility to the Community. After two years the committee resigned en masse to protest the administration's lack of support.

University's Responsibility

Naturally the demise of the President's Committee has not ended the issue of the university's social responsibility (viz. the Open Stacks Movement). The basis for the responsibility lies in several aspects of the university's existence: the university 1) as employer, place of residence, and primary involvement in the lives of thousands of people; 2) as the main landlord and builder in this neighborhood; 3) as the major institutional presence in (and disruption of) the lives of people in the neighborhood; 4) as an educational institution committed to the education of all society; 5) as the location of a day care centre where hundreds of volunteers, students and faculty have learned and continue to "learn from the children"; 6) as an institution which receives most of its funds from the people through their taxes. Any institution of such wealth and impact in a community is de facto committed to the essential life needs of people in the community.

Women and Day Care

Our day care centre grew out of the work of the Toronto Women's Liberation Movement. They felt that commercial day care costing \$100-125 a month was out of the range of most working women. It was their contention then and is ours now that women must be free to participate in all aspects of life with the same degree of flexibility as men. Traditionally our society has allocated the early care and education of children to mothers alone in the home. We feel that this is not right in several ways. First it limits the child's early knowledge to one that one person can give him/her - instead of the range of stimulation that peers and several adults can offer. In addition, it not only prohibits women from engaging in careers (work or study - by choice or by necessity) but it ties them to their children for 24 hours a day and severely limits their areas of stimulation and awareness.

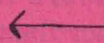
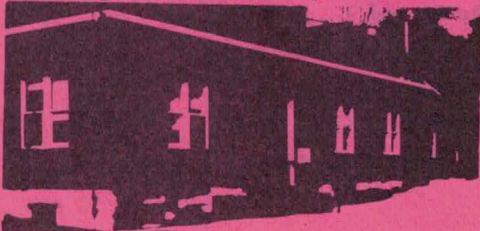
We Want to Expand

While the PAC on Social Responsibility faltered our day care centre flourished, building a strong cooperative community and graduating flocks of 2 year olds. But there has been nowhere to send these kids. We have made several unsuccessful attempts to establish centres for them which would also be parent-volunteer controlled cooperatives where the children could continue the excellent growing experience they have had at Sussex. These have failed because of lack of funds and facilities among the parents, 50-70% of whom are students and support staff of the University. An estimated 500 students and community people have taken a direct part in our centre as volunteers. We are a legitimate part of the university and we need its support. After much negotiation and searching in the university area we have located an unused building. With a few minor renovations the Meteorological Clubhouse situated behind the old Meteorological Building on Bloor Street (across from Varsity Stadium) would be a suitable location. It is now empty and we have been told it is not slated for any other use by the university. Two weeks ago the university effectively ceased negotiations with the Sussex community over the use of the Clubhouse for our desperately needed expansion.

WHY THEN HAVE WE TODAY MOVED THE DAY CARE CENTRE TO SID SMITH? Because we are not yet in the Meteorological Clubhouse. Because we have 15 children over 2, and a waiting list of 20, who need day care NOW. Because two years is too long to wait for a university to form policy while the life needs of its community members - especially its children - tread water. Because we want to bring ourselves and our discussion of university responsibility before the people who have all along been our mainstay - the students. We are in Sid Smith today to make visible ----

- this university's posture of social responsibility and its two year delay in moving on the day care aspect (and for that matter most aspects) of that responsibility
- the need for low cost quality day care for all the university community's children
- the younger and older people of this community
- the cooperative people (parent and volunteer) controlled Sussex day care centre and the students of this university who see in our children and organization the path to a better university, better society, better life.

We urge all students to join us in our campaign to further people-controlled day care at the University of Toronto.



Empty  
for 1  
year...



(read the other side too)



We could  
use it !

DAY  
CARE  
at Sid Smith  
Our kids will  
be in the foyer  
to meet you - all  
of us are a part of  
the university.

10:00 - the kids invite  
Acting Pres. Sword  
to lunch

11:30 - lunch (with Pres. Sword)

3:00 - we meet with Ms. L. Reimer  
( U. of T. administration)

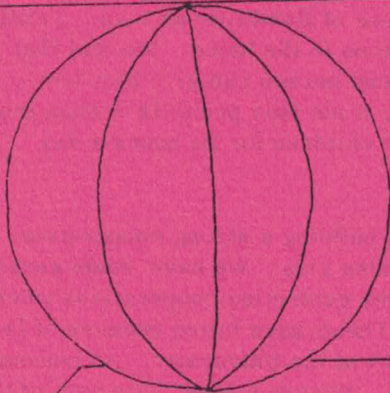
Bring balloons, balls, bubbles - have fun

The Alma Mater  
Society at Univer-  
sith of British Col-  
umbia (their SAC)  
allocated \$60,000  
for day care on  
campus .....

The following Ontario universi-  
ties have day care on campus...  
Brock, Carleton, Guelph, Lake-  
head, Laurentian, McMaster,  
Ottawa, Queen's, Waterloo,  
Western, York.

WHAT YOU CAN DO TO HELP US NOW!

- Call Acting Pres. Sword ,928-2121 and tell him your thoughts
- Write letters to U. of T. administration
- Volunteer 1/2 day a week at the Centre - it is a lot of fun
- Give us donations - we run on a monthly deficit
- Think about this university's responsibility to its communi-  
ty - we pay the taxes - it should serve our needs (not just  
day care, but sports, cultural, social, etc.).
- TELL PEOPLE WE NEED A BUILDING NOW!



It is estimated that  
35 Charles Street W.  
(married students  
housing for U.of T.)  
has 550 children in  
residence in one  
building.

Dear Faculty and Support Staff:

In the past you have supported us in  
many ways - with letters, visits, and money.  
We have always appreciated your support and  
hope that you will continue to help us.

HISTORY AND STRUCTURE

We opened in September, 1969 with about 20 babies - all under 2 years old.  
A survey of the university staff and students indicated a greater need for  
that age group. We rent 12 Sussex from the university at a nominal rent.  
We are a cooperative run with parents and voluntters (mostly U. of T. stu-  
dents) staffing the centre in addition to 3 paid coordinators. We have an  
advisory board of Dr. D. Hughes, Chairman, Dept. of Anthropology, Dr.D.  
Collins, Toronto Free Clinic, and Dr. D. Paiditch, Clark Institute. Our fees  
are based on family income and range from \$40-80 monthly. Most commer-  
cial day care costs at least \$100 a month.

12 SUSSEX  
925-7495